

NAKAMURA

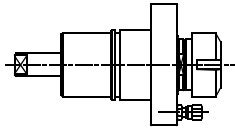
TW-10/SC150/SC250/WT-150/WT-250
WTS-250/WTW-150/WTS-150/SUPER NTJ
SUPER NTJX/NMT3/TMC18

Higher precision : 0,005 mm runout

BMT-55

NK.000.TW10

AXIAL

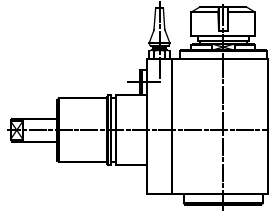


ER-32
RATIO 1:1
6.000 RPM MAX.



NK.010.TW10/A

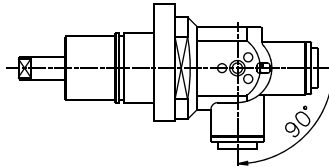
RADIAL



ER-32
RATIO 1:1
6.000 RPM MAX.

NK.021.TW10

**RADIAL
ADJUSTABLE**

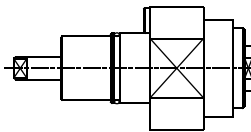


ER-16
RATIO 1:1
6.000 RPM MAX.



NK.002.TW10

**AXIAL
SPEEDER**

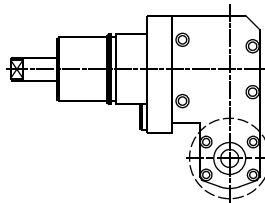


ER-20
RATIO 1:5
20.000 RPM MAX.



NK.030.TW10

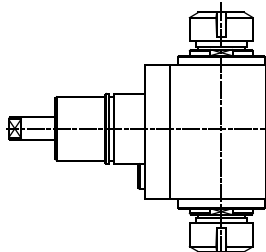
SAW-MILL



Ø 22
RATIO 1:1
3.000 RPM MAX.

NK.008.TW10

**RADIAL
DOUBLE
OUTPUT**



ER-32/ER-32
RATIO 1:1
6.000 RPM MAX.



Tooling for : BIGLIA - CMZ - DOOSAN - DUPLOMATIC - EMCO - HAAS - INDEX - MAZAK - MIYANO - MORI SEIKI - NAKAMURA - OKUMA - SAUTER - SCHAUBLIN - SPINNER - ETC.

MADAULA GROUP

Chicago - São Paulo

Barcelona - Bologna - Waghäusel

hello@madaula.com

Specials : welcome



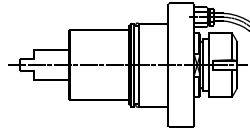
NAKAMURA TW-20/WT-300/SC300

Higher precision : 0,005 mm runout

BMT-65

NK.000.TW20

AXIAL

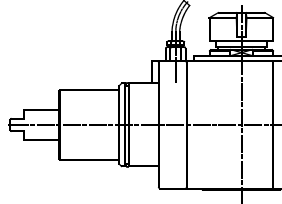


ER-32
RATIO 1:1
6.000 RPM MAX.



NK.010.TW20

RADIAL

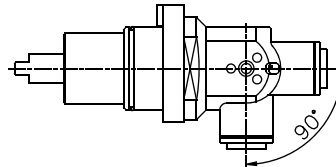


ER-32
RATIO 1:1
6.000 RPM MAX.



NK.021.TW20

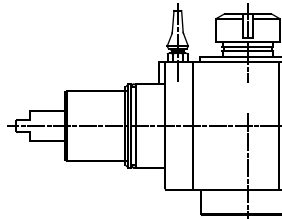
**RADIAL
ADJUSTABLE**



ER-16
RATIO 1:1
6.000 RPM MAX.

NK.016.TW20

**RADIAL WITH
HIGH PRESSURE
COOLANT THROUGH**

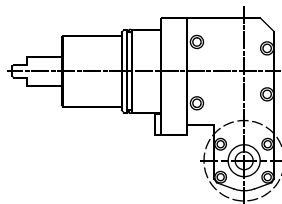


ER-32
RATIO 1:1
6.000 RPM MAX.



NK.030.TW20

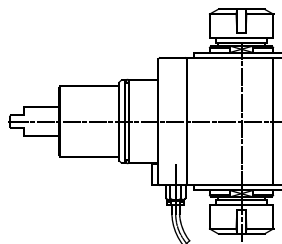
SAW-MILL



Ø 22
RATIO 1:1
3.000 RPM MAX.

NK.008.TW20

**RADIAL
DOUBLE
OUTPUT**



ER-32/ER-32
RATIO 1:1
6.000 RPM MAX.



Tooling for : BIGLIA - CMZ - DOOSAN - DUPLOMATIC - EMCO - HAAS - INDEX - MAZAK - MIYANO - MORI SEIKI - NAKAMURA - OKUMA - SAUTER - SCHAUBLIN - SPINNER - ETC.

MADAULA GROUP

Chicago - São Paulo

Barcelona - Bologna - Waghäusel

hello@madaula.com

Specials : welcome



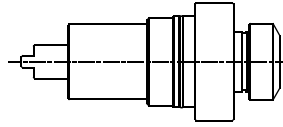
NAKAMURA TW-30/SC450/STW-40

Higher precision : 0,005 mm runout

BMT-75

NK.000.TW30

AXIAL

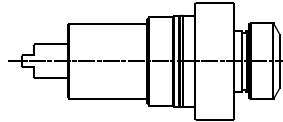


ER-40
RATIO 1:1
6.000 RPM MAX.



NK.005.TW30

**AXIAL WITH
HIGH PRESSURE
COOLANT THROUGH**

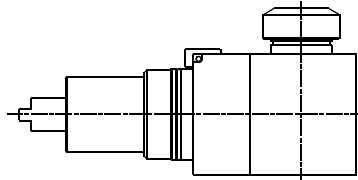


ER-40
RATIO 1:1
6.000 RPM MAX.



NK.010.TW30

RADIAL

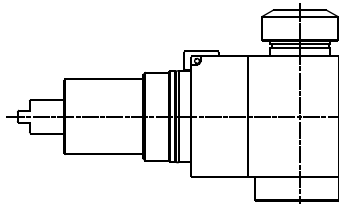


ER-40
RATIO 1:1
6.000 RPM MAX.



NK.016.TW30

**RADIAL WITH
HIGH PRESSURE
COOLANT THROUGH**

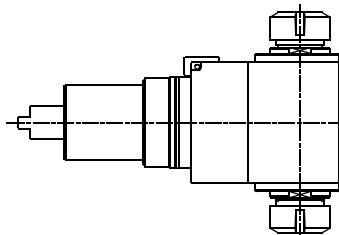


ER-40
RATIO 1:1
6.000 RPM MAX.



NK.008.TW30

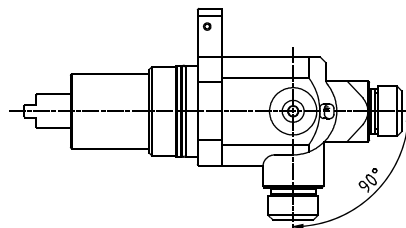
**RADIAL
DOUBLE
OUTPUT**



ER-32/ER-32
RATIO 1:1
6.000 RPM MAX.

NK.021.TW30

**RADIAL
ADJUSTABLE**



ER-25
RATIO 1:1
6.000 RPM MAX.

Tooling for : BIGLIA - CMZ - DOOSAN - DUPLOMATIC - EMCO - HAAS - INDEX - MAZAK - MIYANO - MORI SEIKI - NAKAMURA - OKUMA - SAUTER - SCHAUBLIN - SPINNER - ETC.

MADAULA GROUP

Chicago - São Paulo

Barcelona - Bologna - Waghäusel

hello@madaula.com

Specials : welcome



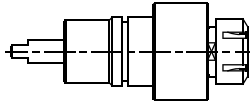
NAKAMURA WT-100 / NTY-3

Higher precision : 0,005 mm runout

BMT-44

NK.000.WT100

AXIAL

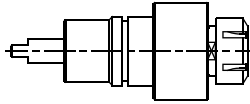


ER-25
RATIO 1:1
6.000 RPM MAX.



NK.005.WT100

**AXIAL WITH
HIGH PRESSURE
COOLANT THROUGH**

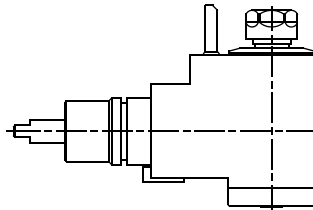


ER-25
RATIO 1:1
6.000 RPM MAX.



NK.010.WT100

RADIAL

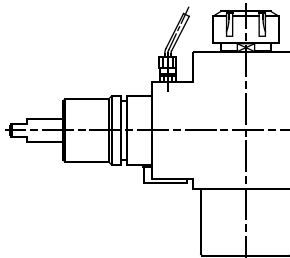


ER-25
RATIO 1:1
6.000 RPM MAX.



NK.016.WT100

**RADIAL WITH
HIGH PRESSURE
COOLANT THROUGH**

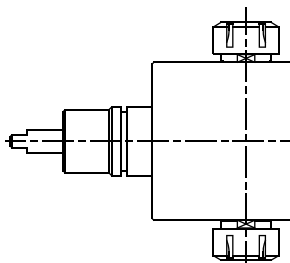


ER-25
RATIO 1:1
6.000 RPM MAX.



NK.008.WT100

**RADIAL
DOUBLE
OUTPUT**



ER-25/ER-25
RATIO 1:1
6.000 RPM MAX.

Tooling for : BIGLIA - CMZ - DOOSAN - DUPLOMATIC - EMCO - HAAS - INDEX - MAZAK - MIYANO - MORI SEIKI - NAKAMURA - OKUMA - SAUTER - SCHAUBLIN - SPINNER - ETC.

MADAULA GROUP

Chicago - São Paulo

Barcelona - Bologna - Waghäusel

hello@madaula.com

Specials : welcome



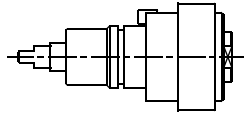
NAKAMURA WT-100 / NTY-3

Higher precision : 0,005 mm runout

BMT-44

NK.002.WT100

**AXIAL
SPEEDER**

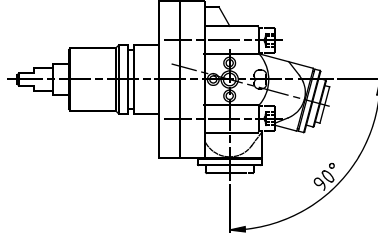


ER-16A
RATIO 1:5
12.000 RPM MAX.



NK.021.WT100

**RADIAL
ADJUSTABLE**

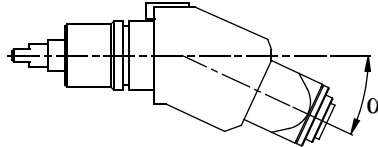


ER-16
RATIO 1:1
6.000 RPM MAX.



NK.012.WT100

**FIXED
ANGLE**

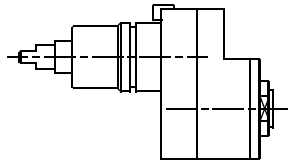


ER-16
RATIO 1:1
6.000 RPM MAX.



NK.026.WT100

**AXIAL
SPEEDER
OFFSET**

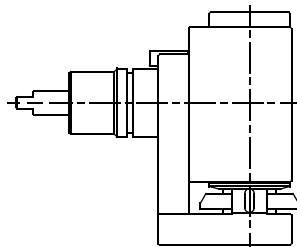


ER-16
RATIO 1:5
12.000 RPM MAX.



NK.051.WT100

**RADIAL
SWIVELING**



Ø 22
RATIO 1:1
3.000 RPM MAX.

Tooling for : BIGLIA - CMZ - DOOSAN - DUPLOMATIC - EMCO - HAAS - INDEX - MAZAK - MIYANO - MORI SEIKI - NAKAMURA - OKUMA - SAUTER - SCHAUBLIN - SPINNER - ETC.

MADAULA GROUP

Chicago - São Paulo

Barcelona - Bologna - Waghäusel

hello@madaula.com

Specials : welcome

