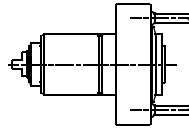


MIYANO ABX51/64

Higher precision : 0,005 mm runout

MY.000.ABX/1

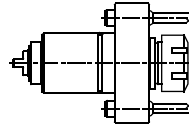
AXIAL



ER-25A
RATIO 1:1
6.000 RPM MAX.

MY.000.ABX/2

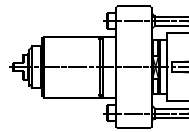
AXIAL



ER-25
RATIO 1:1
6.000 RPM MAX.

MY.000.ABX/3

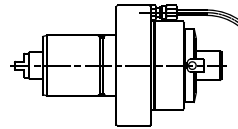
AXIAL HEAVY DUTY



ER-32
RATIO 1:1
6.000 RPM MAX.

MY.038.ABX

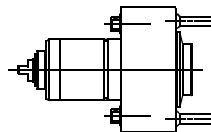
AXIAL SAW-MILL



Ø 22
RATIO 1:1
2.000 RPM MAX.

MY.005.ABX/1

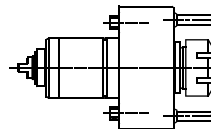
AXIAL WITH HIGH PRESSURE COOLANT THROUGH



ER-25A
RATIO 1:1
6.000 RPM MAX.

MY.005.ABX/2

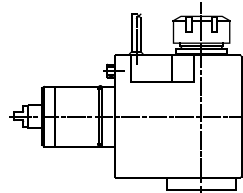
AXIAL WITH HIGH PRESSURE COOLANT THROUGH



ER-25
RATIO 1:1
6.000 RPM MAX.

MY.010.ABX/1

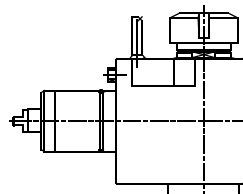
RADIAL



ER-25
RATIO 1:1
6.000 RPM MAX.

MY.010.ABX/2

RADIAL HEAVY DUTY



ER-32
RATIO 1:1
6.000 RPM MAX.



Tooling for : BIGLIA - CMZ - DOOSAN - DUPLOMATIC - EMCO - HAAS - INDEX - MAZAK - MIYANO - MORI SEIKI - NAKAMURA - OKUMA - SAUTER - SCHAUBLIN - SPINNER - ETC.

MADAULA GROUP

Chicago - São Paulo

Barcelona - Bologna - Waghäusel

hello@madaula.com

Specials : welcome

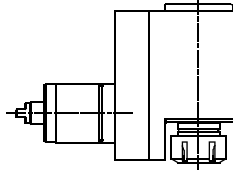


MIYANO ABX51/64

Higher precision : 0,005 mm runout

MY.011.ABX

**RADIAL
SET-BACK**

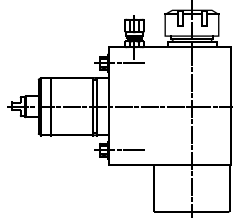


ER-25
RATIO 1:1
6.000 RPM MAX.



MY.016.ABX

**RADIAL WITH
HIGH PRESSURE
COOLANT THROUGH**

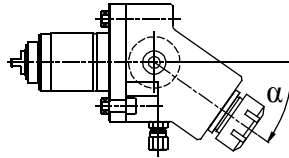


ER-25
RATIO 1:1
6.000 RPM MAX.



MY.012.ABX

FIXED ANGLE

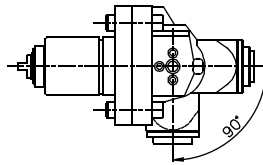


ER-25
RATIO 1:1
6.000 RPM MAX.



MY.021.ABX/1

**RADIAL
ADJUSTABLE**

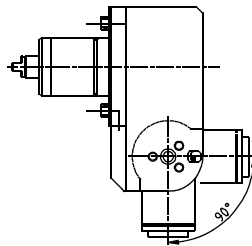


ER-16A
RATIO 1:1
4.000 RPM MAX.



MY.021.ABX/2

**RADIAL
ADJUSTABLE
SPEEDER**

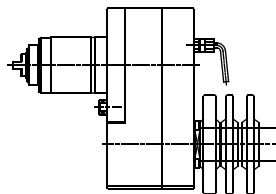


ER-16A
RATIO 1:3
12.000 RPM MAX.



MY.030.ABX

**SAW-MILL
REDUCER**



Ø27
RATIO 2:1
4.000 RPM MAX.

Tooling for : BIGLIA - CMZ - DOOSAN - DUPLOMATIC - EMCO - HAAS - INDEX - MAZAK - MIYANO - MORI SEIKI - NAKAMURA - OKUMA - SAUTER - SCHAUBLIN - SPINNER - ETC.

MADAULA GROUP

Chicago - São Paulo

Barcelona - Bologna - Waghäusel

hello@madaula.com

Specials : welcome

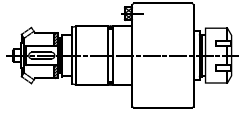


MIYANO BND34

Higher precision : 0,005 mm runout

MY.000.BND34

AXIAL

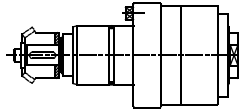


ER-25
RATIO 1:1
3.500 RPM MAX.



MY.002.BND34

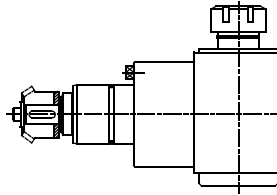
AXIAL SPEEDER



ER-20A
RATIO 1:5
12.000 RPM MAX.

MY.010.BND34

RADIAL

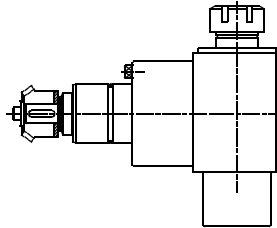


ER-25
RATIO 1:1
3.500 RPM MAX.



MY.016.BND34

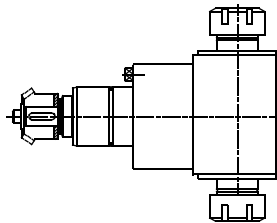
RADIAL WITH HIGH PRESSURE COOLANT THROUGH



ER-25
RATIO 1:1
3.500 RPM MAX.

MY.008.BND34

RADIAL DOUBLE OUTPUT

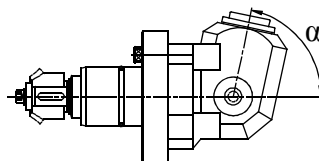


ER-25
RATIO 1:1
4.000 RPM MAX.



MY.012.BND34

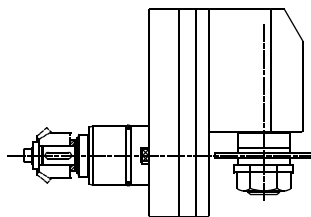
FIXED ANGLE



ER-16A
RATIO 1:1
4.000 RPM MAX.

MY.051.BND34

"Y" AXIS ± 5 mm



Ø1
RATIO 1.5:1
4.000 RPM MAX.



Tooling for : BIGLIA - CMZ - DOOSAN - DUPLOMATIC - EMCO - HAAS - INDEX - MAZAK - MIYANO - MORI SEIKI - NAKAMURA - OKUMA - SAUTER - SCHAUBLIN - SPINNER - ETC.

MADAULA GROUP

Chicago - São Paulo

Barcelona - Bologna - Waghäusel

hello@madaula.com

Specials : welcome

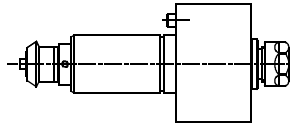


MIYANO BND51/54 BNE34/51
LZ01R/02R

Higher precision : 0,005 mm runout

MY.000.BND51

AXIAL

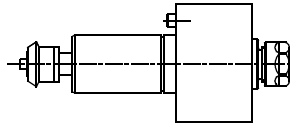


ER-20
RATIO 1:1
4.000 RPM MAX.



MY.005.BND51

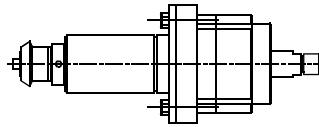
**AXIAL WITH
HIGH PRESSURE
COOLANT THROUGH**



ER-20
RATIO 1:1
4.000 RPM MAX.

MY.002.BND51

**AXIAL
SPEEDER**

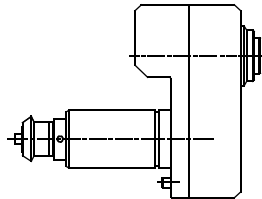


ER-11
RATIO 1:5
20.000 RPM MAX.



MY.006.BND51

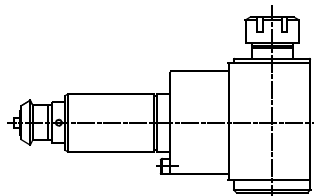
AXIAL OFFSET



ER-20A
RATIO 1:1
4.000 RPM MAX.

MY.010.BND51

RADIAL

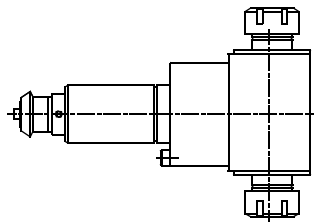


ER-25
RATIO 1:1
4.000 RPM MAX.



MY.008.BND51

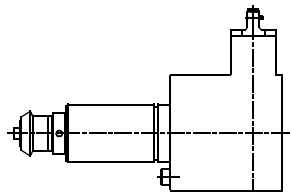
**RADIAL
DOUBLE
OUTPUT**



ER-25
RATIO 1:1
4.000 RPM MAX.

MY.013.BND51

**RADIAL
INSIDE TUBE**



SPECIAL
RATIO 1:3.25
10.000 RPM MAX.



Tooling for : BIGLIA - CMZ - DOOSAN - DUPLOMATIC - EMCO - HAAS - INDEX - MAZAK - MIYANO - MORI SEIKI - NAKAMURA - OKUMA - SAUTER - SCHAUBLIN - SPINNER - ETC.

MADAULA GROUP

Chicago - São Paulo

Barcelona - Bologna - Waghäusel

hello@madaula.com

Specials : welcome

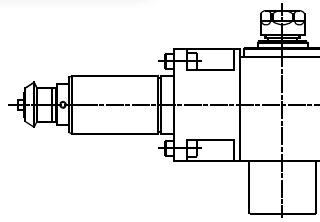


MIYANO BND51/54 BNE34/51
LZ01R/02R

Higher precision : 0,005 mm runout

MY.016.BND51

**RADIAL WITH
HIGH PRESSURE
COOLANT THROUGH**

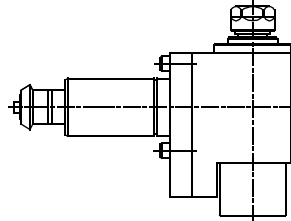


ER-20
RATIO 1:1
4.000 RPM MAX.



MY.018.BND51

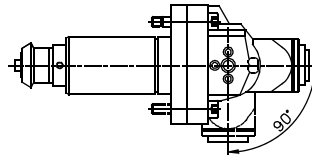
RADIAL SPEEDER



ER-20
RATIO 1:2
8.000 RPM MAX.

MY.021.BND51/1

**RADIAL
ADJUSTABLE**

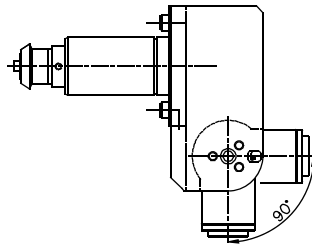


ER-16
RATIO 1:1
4.000 RPM MAX.



MY.021.BND51/2

**RADIAL
ADJUSTABLE**

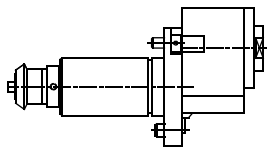


ER-16A
RATIO 1:3
12.000 RPM MAX.



MY.050.BND51/1

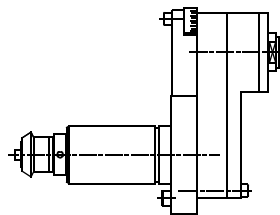
"Y" AXIS ± 10 mm



ER-20A
RATIO 1:1
4.000 RPM MAX.

MY.050.BND51/2

"Y" AXIS ± 40 mm



ER-16A
RATIO 1:1
4.000 RPM MAX.



Tooling for : BIGLIA - CMZ - DOOSAN - DUPLOMATIC - EMCO - HAAS - INDEX - MAZAK - MIYANO - MORI SEIKI - NAKAMURA - OKUMA - SAUTER - SCHAUBLIN - SPINNER - ETC.

MADAULA GROUP

Chicago - São Paulo

Barcelona - Bologna - Waghäusel

hello@madaula.com

Specials : welcome

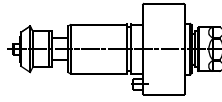


MIYANO BNE 34/51 (LOWER TURRET)

Higher precision : 0,005 mm runout

MY.000.BNE34

AXIAL

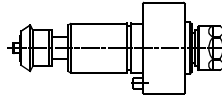


ER-20
RATIO 1:1
5.000 RPM MAX.



MY.005.BNE34

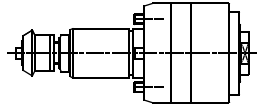
**AXIAL WITH
HIGH PRESSURE
COOLANT THROUGH**



ER-20
RATIO 1:1
5.000 RPM MAX.

MY.002.BNE34

AXIAL SPEEDER

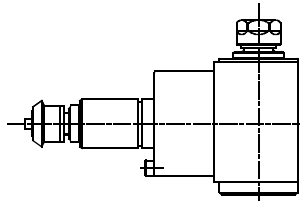


ER-20A
RATIO 1:5
12.000 RPM MAX.



MY.010.BNE34

RADIAL

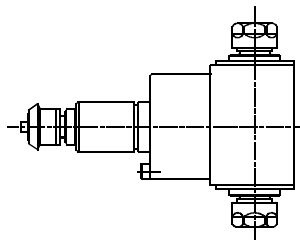


ER-20
RATIO 1:1
5.000 RPM MAX.



MY.008.BNE34

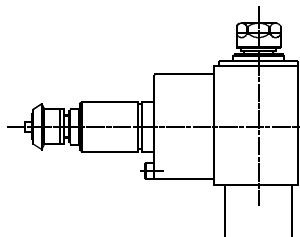
**RADIAL
DOUBLE OUTPUT**



ER-20
RATIO 1:1
5.000 RPM MAX.

MY.016.BNE34

**RADIAL WITH
HIGH PRESSURE
COOLANT THROUGH**



ER-20
RATIO 1:1
5.000 RPM MAX.



Tooling for : BIGLIA - CMZ - DOOSAN - DUPLOMATIC - EMCO - HAAS - INDEX - MAZAK - MIYANO - MORI SEIKI - NAKAMURA - OKUMA - SAUTER - SCHAUBLIN - SPINNER - ETC.

MADAULA GROUP

Chicago - São Paulo

Barcelona - Bologna - Waghäusel

hello@madaula.com

Specials : welcome

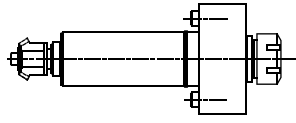


MIYANO BNJ

Higher precision : 0,005 mm runout

MY.000.BNJ

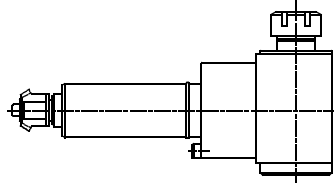
AXIAL



ER-25
RATIO 1:1
4.000 RPM MAX.

MY.010.BNJ

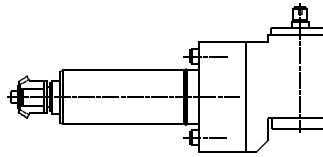
RADIAL



ER-25
RATIO 1:1
4.000 RPM MAX.

MY.013.BNJ

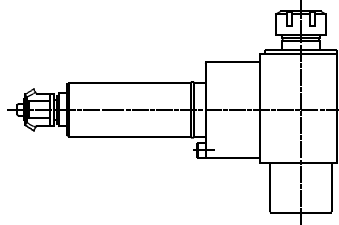
**RADIAL
SPEEDER**



ER-8
RATIO 1:5
20.000 RPM MAX.

MY.016.BNJ

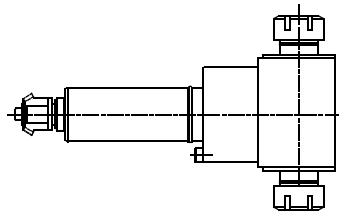
**RADIAL WITH
HIGH PRESSURE
COOLANT THROUGH**



ER-25
RATIO 1:1
4.000 RPM MAX.

MY.008.BNJ

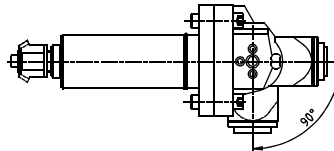
**RADIAL
DOUBLE
OUTPUT**



ER-25
RATIO 1:1
4.000 RPM MAX.

MY.021.BNJ

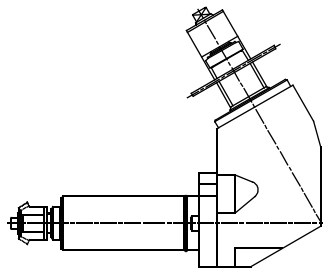
**RADIAL
ADJUSTABLE**



ER-16
RATIO 1:1
4.000 RPM MAX.

MY.030.BNJ

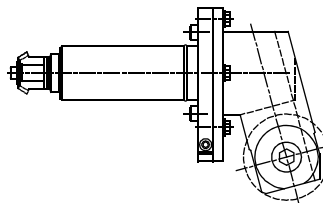
**SAW-MILL
REDUCER**



Ø20
RATIO 4:1
2.000 RPM MAX.

MY.036.BNJ

**GEAR
HOBBING**



Ø16
RATIO 4:1
2.500 RPM MAX.



Tooling for : BIGLIA - CMZ - DOOSAN - DUPLOMATIC - EMCO - HAAS - INDEX - MAZAK - MIYANO - MORI SEIKI - NAKAMURA - OKUMA - SAUTER - SCHAUBLIN - SPINNER - ETC.

MADAULA GROUP

Chicago - São Paulo

Barcelona - Bologna - Waghäusel

hello@madaula.com

Specials : welcome

