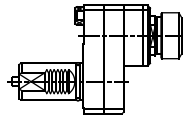


MAZAK MULTIPLEX 610/6100 620/6200

Higher precision : 0,005 mm runout

MK.001.6100
MK.001.6200

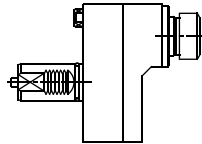
**AXIAL
OFFSET**



ER-32
RATIO 1:1
5.000 RPM MAX.

MK.006.6100
MK.006.6200

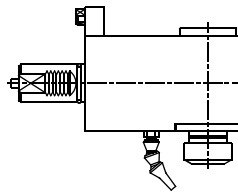
**AXIAL OFFSET
WITH HIGH PRESSURE
COOLANT THROUGH**



ER-32
RATIO 1:1
5.000 RPM MAX.

MK.010.6100
MK.010.6200

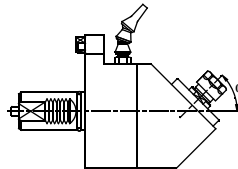
RADIAL



ER-32
RATIO 1:1
5.000 RPM MAX.

MK.012.6100
MK.012.6200

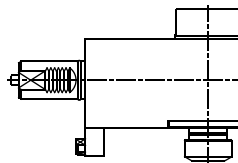
**FIXED ANGLE
(ANY ANGLE)**



ER-16
RATIO 1:1.3
5.000 RPM MAX.

MK.016.6100
MK.016.6200

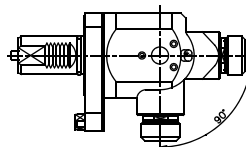
**RADIAL WITH HIGH
COOLANT THROUGH**



ER-32
RATIO 1:1
5.000 RPM MAX.

MK.021.6100
MK.021.6200

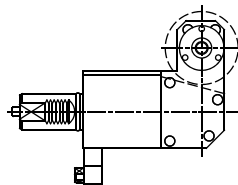
**RADIAL
ADJUSTABLE**



ER-25
RATIO 1:1
5.000 RPM MAX.

MK.030.6100
MK.030.6200

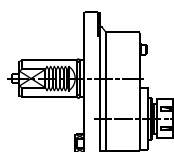
SAW-MILL



Upon request
RATIO 1:1
3.500 RPM MAX.

MK.050.6100
MK.050.6200

**AXIAL ADJUSTABLE
"Y" AXIS ± 14 mm**



ER-25
RATIO 1:1.15
5.000 RPM MAX.



Tooling for : BIGLIA - CMZ - DOOSAN - DUPLOMATIC - EMCO - HAAS - INDEX - MAZAK - MIYANO - MORI SEIKI - NAKAMURA - OKUMA - SAUTER - SCHAUBLIN - SPINNER - ETC.

MADAULA GROUP
Chicago - São Paulo
Barcelona - Bologna - Waghäusel

hello@madaula.com
Specials : welcome

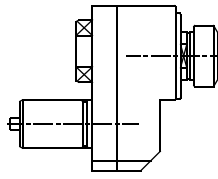


MAZAK MULTIPLEX 630/6300

Higher precision : 0,005 mm runout

MK.001.6300

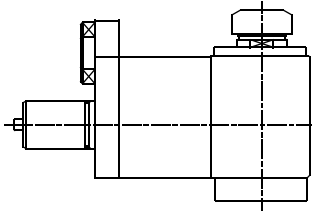
**AXIAL
OFFSET**



ER-40
RATIO 2:1
5.000 RPM MAX.

MK.010.6300/A

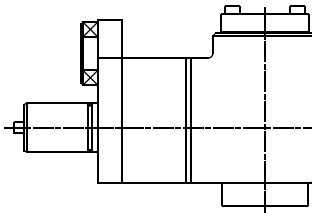
RADIAL



ER-40
RATIO 1:1
5.000 RPM MAX.

MK.010.6300/B

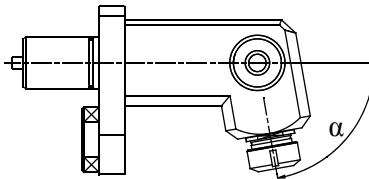
RADIAL



ISO-40
RATIO 1:1
5.000 RPM MAX.

MK.012.6300

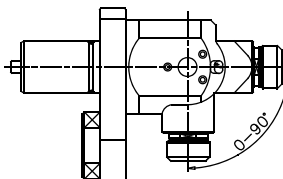
**FIXED ANGLE
(ANY ANGLE)**



ER-32
RATIO 1:1
5.000 RPM MAX.

MK.021.6300

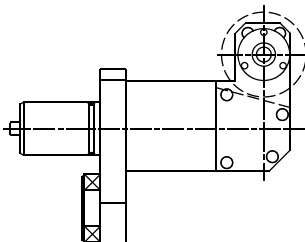
**RADIAL
ADJUSTABLE**



ER-25
RATIO 1:1
5.000 RPM MAX.

MK.030.6300

SAW-MILL



Upon request
RATIO 1:1
3.500 RPM MAX.



Tooling for : BIGLIA - CMZ - DOOSAN - DUPLOMATIC - EMCO - HAAS - INDEX - MAZAK - MIYANO - MORI SEIKI - NAKAMURA - OKUMA - SAUTER - SCHAUBLIN - SPINNER - ETC.

MADAULA GROUP

Chicago - São Paulo

Barcelona - Bologna - Waghäusel

hello@madaula.com

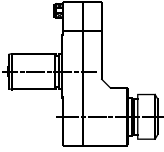

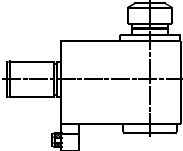
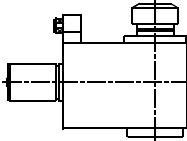

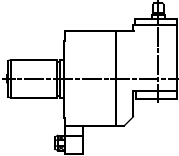
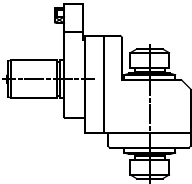

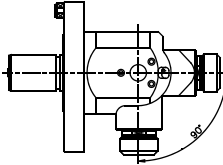
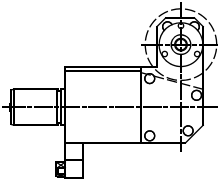

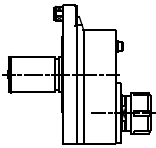
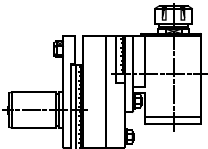

Specials : welcome



MAZAK

SQT 100M/10M
NEXUS 100M/150M

Higher precision : 0,005 mm runout

MK.001.SQ100	AXIAL OFFSET		ER-32 RATIO 1:1 5.000 RPM MAX.	
MK.010.SQ100	RADIAL		ER-32 RATIO 1:1 5.000 RPM MAX.	
MK.033.SQ100	RADIAL SUBSPINDLE		ER-32 RATIO 1:1 5.000 RPM MAX.	
MK.013.SQ100	RADIAL SPEEDER		ER-8 RATIO 1:4 15.000 RPM MAX.	
MK.008.SQ100/A	RADIAL DOUBLE OUTPUT		ER-25 / ER-25 RATIO 1:1 5.000 RPM MAX.	
MK.021.SQ100	RADIAL ADJUSTABLE		ER-25 RATIO 1:1 5.000 RPM MAX.	
MK.030.SQ100	SAW-MILL		Upon request RATIO 1:1 3.500 RPM MAX.	
MK.050.SQ100	AXIAL ADJUSTABLE "Y" AXIS ± 14 mm		ER-32 RATIO 1:1.15 5.000 RPM MAX.	
MK.051.SQ100	RADIAL DOUBLE SWIVELING		ER-25 RATIO 1:1 5.000 RPM MAX.	

Tooling for : BIGLIA - CMZ - DOOSAN - DUPLOMATIC - EMCO - HAAS - INDEX - MAZAK - MIYANO - MORI SEIKI - NAKAMURA - OKUMA - SAUTER - SCHAUBLIN - SPINNER - ETC.

MADAULA GROUP

Chicago - São Paulo

Barcelona - Bologna - Waghäusel

hello@madaula.com

Specials : welcome



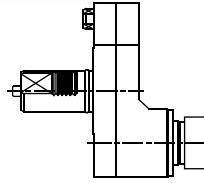
MAZAK

SQT 200M/250M/15M/18M
NEXUS 200M/250M

Higher precision : 0,005 mm runout

MK.001.SQ200

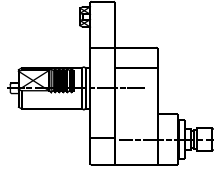
**AXIAL
OFFSET**



ER-32
RATIO 1:1
5.000 RPM MAX.

MK.026.SQ200

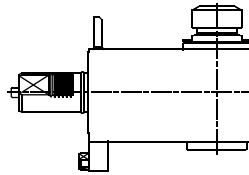
**AXIAL
OFFSET
SPEEDER**



ER-16
RATIO 1:4
12.000 RPM MAX.

MK.010.SQ200

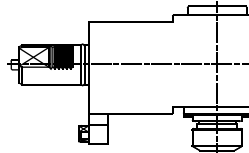
RADIAL



ER-32
RATIO 1:1
5.000 RPM MAX.

MK.033.SQ200

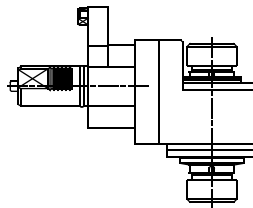
**RADIAL
SUBSPINDLE**



ER-32
RATIO 1:1
5.000 RPM MAX.

MK.008.SQ200

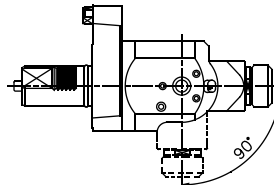
**RADIAL
DOUBLE
OUTPUT**



ER-32
RATIO 1:1
5.000 RPM MAX.

MK.021.SQ200

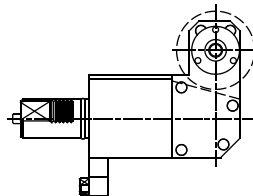
**RADIAL
ADJUSTABLE**



ER-25
RATIO 1:1
5.000 RPM MAX.

MK.030.SQ200

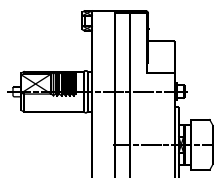
SAW-MILL



Upon request
RATIO 1:1
3.500 RPM MAX.

MK.050.SQ200

**AXIAL ADJUSTABLE
"Y" AXIS ± 37 mm**



ER-32
RATIO 1:1
5.000 RPM MAX.



Tooling for : BIGLIA - CMZ - DOOSAN - DUPLOMATIC - EMCO - HAAS - INDEX - MAZAK - MIYANO - MORI SEIKI - NAKAMURA - OKUMA - SAUTER - SCHAUBLIN - SPINNER - ETC.

MADAULA GROUP

Chicago - São Paulo

Barcelona - Bologna - Waghäusel

hello@madaula.com

Specials : welcome



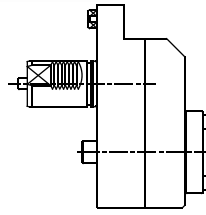
MAZAK

SQT 28M/30M/300M
NEXUS 300M/350M/400M/450M

Higher precision : 0,005 mm runout

MK.001.SQ28

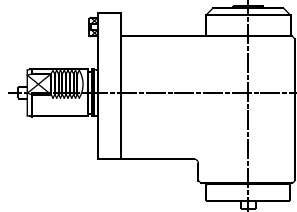
**AXIAL
OFFSET**



ISO-40
RATIO 1:1
3.000 RPM MAX.

MK.010.SQ28

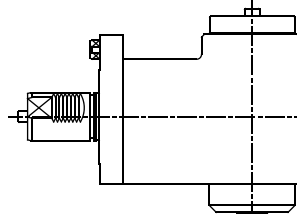
RADIAL



ISO-40
RATIO 1:1
3.000 RPM MAX.

MK.033.SQ28

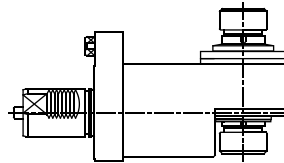
**RADIAL
SUBSPINDLE**



ISO-40
RATIO 1:1
3.000 RPM MAX.

MK.008.SQ28

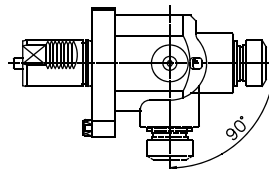
**RADIAL
DOUBLE
OUTPUT**



ER-32
RATIO 1:1
3.000 RPM MAX.

MK.021.SQ28

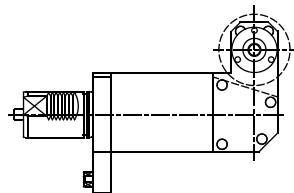
**RADIAL
ADJUSTABLE**



ER-32
RATIO 1:1
3.000 RPM MAX.

MK.030.SQ28

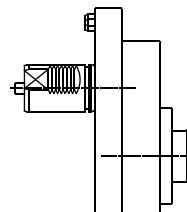
SAW-MILL



Upon request
RATIO 1:1
3.000 RPM MAX.

MK.050.SQ28

AXIAL "Y" AXIS



ER-32A
RATIO 1:1
3.000 RPM MAX.



Tooling for : BIGLIA - CMZ - DOOSAN - DUPLOMATIC - EMCO - HAAS - INDEX - MAZAK - MIYANO - MORI SEIKI - NAKAMURA - OKUMA - SAUTER - SCHAUBLIN - SPINNER - ETC.

MADAULA GROUP

Chicago - São Paulo

Barcelona - Bologna - Waghäusel

hello@madaula.com

Specials : welcome

