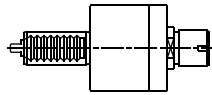


DUPLOMATIC VDI-20

Higher precision : 0,005 mm runout

DU.000.20/ER16

AXIAL

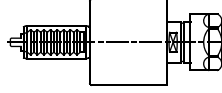


ER-16
RATIO 1:1
4000 RPM MAX



DU.000.20/ER20

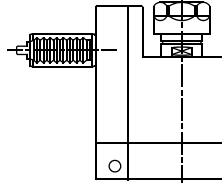
AXIAL



ER-20
RATIO 1:1
4000 RPM MAX

DU.011.20

**RADIAL
SET-BACK**

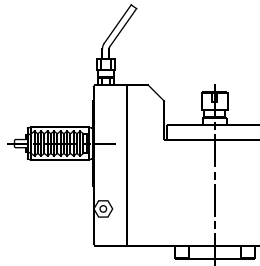


ER-20
RATIO 1:1
4000 RPM MAX



DU.013.20

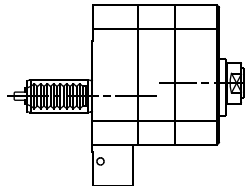
**RADIAL
SET-BACK
SPEEDER**



ER-11
RATIO 1:3
15000 RPM MAX

DU.026.20

AXIAL SPEEDER

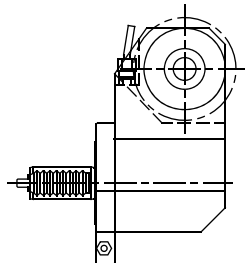


ER-11
RATIO 1:3
15000 RPM MAX



DU.030.20

SAW CUTTER



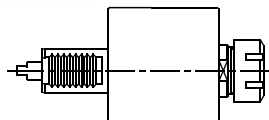
Ø 25
RATIO 1:1
3000 RPM MAX



DUPLOMATIC VDI-30

DU.000.30

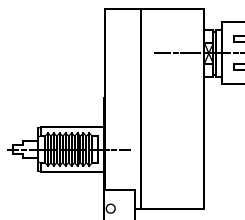
AXIAL



ER-25
RATIO 1:1
4000 RPM MAX

DU.001.30

**AXIAL
OFFSET**



ER-25
RATIO 1:1
6000 RPM MAX



Tooling for : BIGLIA - CMZ - DOOSAN - DUPLOMATIC - EMCO - HAAS - INDEX - MAZAK - MIYANO - MORI SEIKI - NAKAMURA - OKUMA - SAUTER - SCHAUBLIN - SPINNER - ETC.

MADAULA GROUP

Chicago - São Paulo

Barcelona - Bologna - Waghäusel

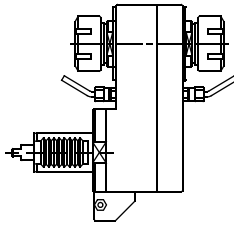

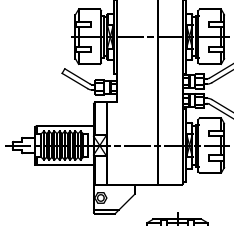

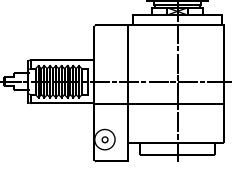

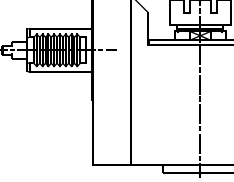

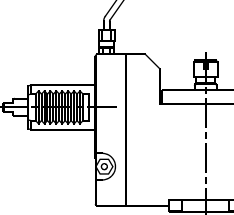

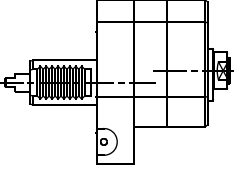

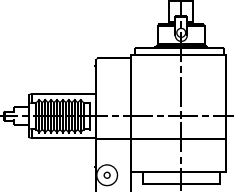
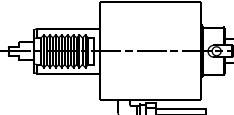
hello@madaula.com

Specials : welcome



DUPLOMATIC VDI-30

Higher precision : 0,005 mm runout

DU.004.30/2	AXIAL DOUBLE OUTPUT		ER-25 x2 RATIO 1:1 6000 RPM MAX	
DU.004.30/3	AXIAL TRIPLE OUTPUT		ER-25 x3 RATIO 1:1 6000 RPM MAX	
DU.010.30	RADIAL		ER-25 RATIO 1:1 4000 RPM MAX	
DU.011.30	RADIAL SET-BACK		ER-25 RATIO 1:1 4000 RPM MAX	
DU.013.30	RADIAL SET-BACK SPEEDER		ER-11 RATIO 1:3 18000 RPM MAX	
DU.026.30	AXIAL OFFSET SPEEDER		ER-11 RATIO 1:3 15000 RPM MAX	
DU.037.30	RADIAL SAW-MILL		Ø 16 RATIO 1:1 6000 RPM MAX	
DU.038.30	AXIAL SAW-MILL		Ø 16 RATIO 1:1 6000 RPM MAX	

Tooling for : BIGLIA - CMZ - DOOSAN - DUPLOMATIC - EMCO - HAAS - INDEX - MAZAK - MIYANO - MORI SEIKI - NAKAMURA - OKUMA - SAUTER - SCHAUBLIN - SPINNER - ETC.

MADAULA GROUP

Chicago - São Paulo

Barcelona - Bologna - Waghäusel

hello@madaula.com

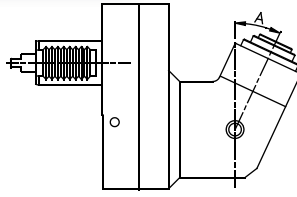
Specials : welcome



DUPLOMATIC VDI-30

DU.012.30

**FIXED ANGLE
(ANY ANGLE)**



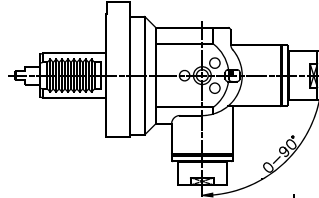
Higher precision : 0,005 mm runout

ER-16A
RATIO 1:1
4000 RPM MAX



DU.021.30

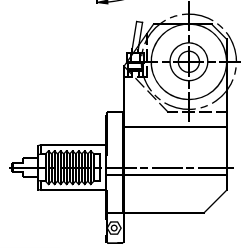
**RADIAL
ADJUSTABLE**



ER-20
RATIO 1:1
8000 RPM MAX

DU.030.30

SAW-MILL



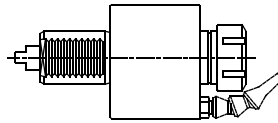
Ø 25
RATIO 1:1
3000 RPM MAX



DUPLOMATIC VDI-40

DU.000.40

AXIAL

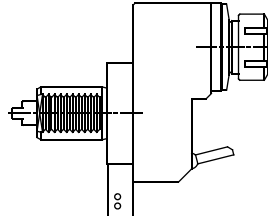


ER-32
RATIO 1:1
4000 RPM MAX



DU.001.40

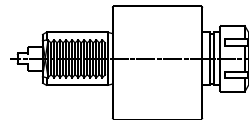
**AXIAL
OFFSET**



ER-32
RATIO 1:1
5000 RPM MAX

DU.005.40

**AXIAL WITH
HIGH PRESSURE
COOLANT THROUGH**

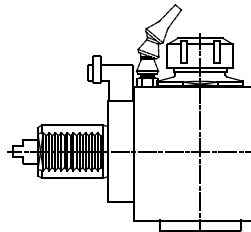


ER-32
RATIO 1:1
3000 RPM MAX



DU.010.40

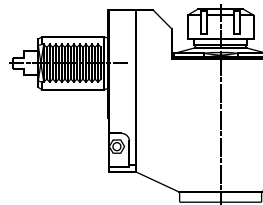
RADIAL



ER-32
RATIO 1:1
4000 RPM MAX

DU.011.40

**RADIAL
SET-BACK**



ER-32
RATIO 1:1
4000 RPM MAX



Tooling for : BIGLIA - CMZ - DOOSAN - DUPLOMATIC - EMCO - HAAS - INDEX - MAZAK - MIYANO - MORI SEIKI - NAKAMURA - OKUMA - SAUTER - SCHAUBLIN - SPINNER - ETC.

MADAULA GROUP

Chicago - São Paulo

Barcelona - Bologna - Waghäusel

hello@madaula.com

Specials : welcome



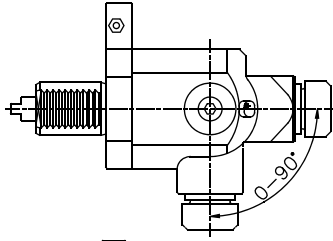
DUPLOMATIC VDI-40

Higher precision : 0,005 mm runout

VDI-40

DU.021.40

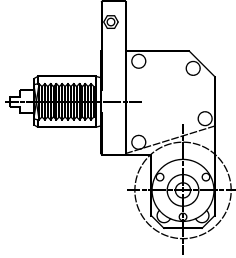
**RADIAL
ADJUSTABLE**



ER-25
RATIO 1:1
4000 RPM MAX

DU.030.40

SAW-MILL



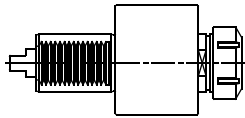
Ø 16
RATIO 1:1
4000 RPM MAX



DUPLOMATIC VDI-50

DU.000.50

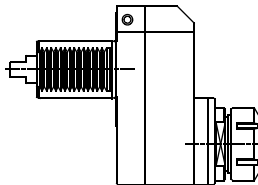
AXIAL



ER-40
RATIO 1:1
3000 RPM MAX

DU.001.50

**AXIAL
OFFSET**

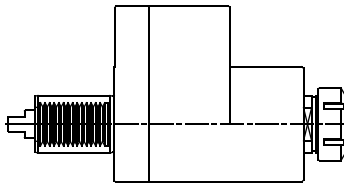


ER-40
RATIO 1:1
3000 RPM MAX



DU.003.50

**RADIAL
REDUCER**

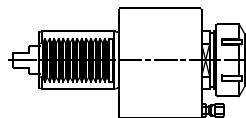


ER-40
RATIO 4:1
3000 RPM MAX



DU.005.50

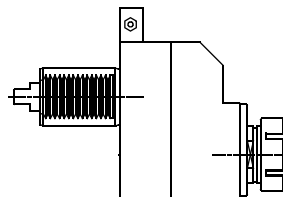
**AXIAL WITH
HIGH PRESSURE
COOLANT THROUGH**



ER-40
RATIO 1:1
3000 RPM MAX

DU.006.50

**AXIAL OFFSET WITH
HIGH PRESSURE
COOLANT THROUGH**



ER-40
RATIO 1:1
4000 RPM MAX



Tooling for : BIGLIA - CMZ - DOOSAN - DUPLOMATIC - EMCO - HAAS - INDEX - MAZAK - MIYANO - MORI SEIKI - NAKAMURA - OKUMA - SAUTER - SCHAUBLIN - SPINNER - ETC.

MADAULA GROUP

Chicago - São Paulo

Barcelona - Bologna - Waghäusel

hello@madaula.com

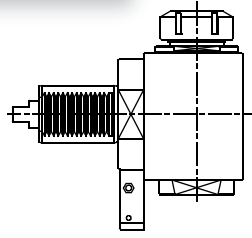
Specials : welcome



DIPLOMATIC VDI-50

Higher precision : 0,005 mm runout

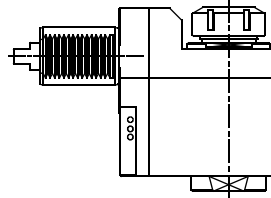
DU.010.50 **RADIAL**



ER-40
RATIO 1:1
4000 RPM MAX

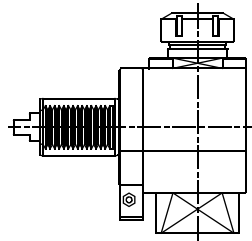


DU.011.50 **RADIAL SET-BACK**



ER-40
RATIO 1:1
3000 RPM MAX

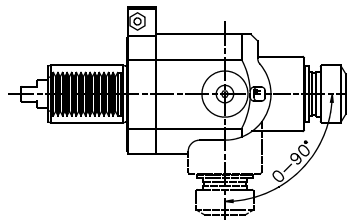
DU.016.50 **RADIAL WITH HIGH PRESSURE COOLANT THROUGH**



ER-40
RATIO 1:1
4000 RPM MAX



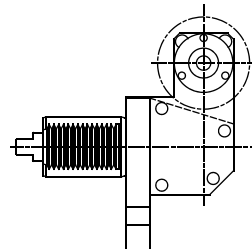
DU.021.50 **RADIAL ADJUSTABLE**



ER-32
RATIO 1:1
4000 RPM MAX



DU.030.50 **SAW-MILL**

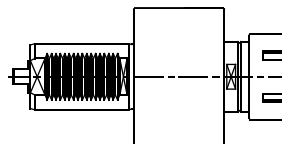


Ø 25.4
RATIO 1:1
3000 RPM MAX



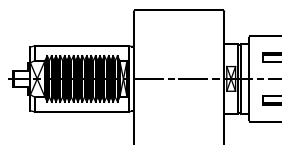
DIPLOMATIC VDI-60

DU.000.60 **AXIAL**



ER-50
RATIO 1:1
4000 RPM MAX

DU.005.60 **AXIAL WITH HIGH PRESSURE COOLANT THROUGH**



ER-50
RATIO 1:1
3000 RPM MAX



Tooling for : BIGLIA - CMZ - DOOSAN - DIPLOMATIC - EMCO - HAAS - INDEX - MAZAK - MIYANO - MORI SEIKI - NAKAMURA - OKUMA - SAUTER - SCHAUBLIN - SPINNER - ETC.

MADAULA GROUP
Chicago - São Paulo
Barcelona - Bologna - Waghäusel

hello@madaula.com
Specials : welcome

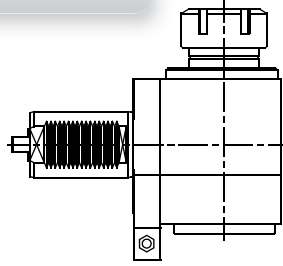


DUPLOMATIC VDI-60

Higher precision : 0,005 mm runout

DU.010.60

RADIAL

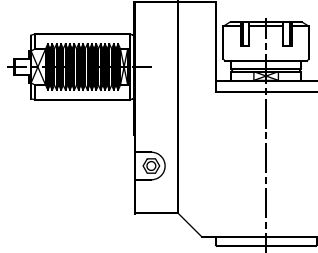


ER-50
RATIO 1:1
3000 RPM MAX



DU.011.60

RADIAL SET-BACK

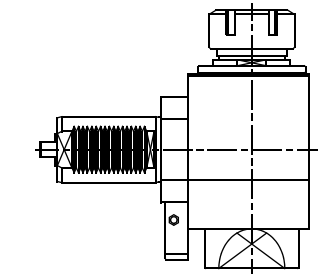


ER-50
RATIO 1:1
4000 RPM MAX



DU.016.60

RADIAL WITH HIGH PRESSURE COOLANT THROUGH

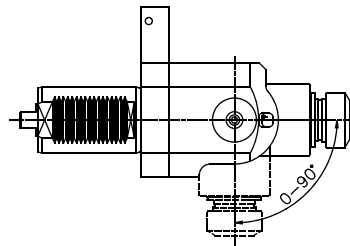


ER-50
RATIO 1:1
3000 RPM MAX



DU.021.60

RADIAL ADJUSTABLE



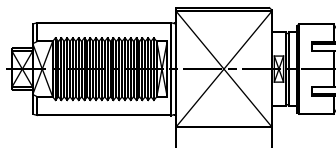
ER-32
RATIO 1:1
4000 RPM MAX



DUPLOMATIC VDI-80

DU.000.80

AXIAL

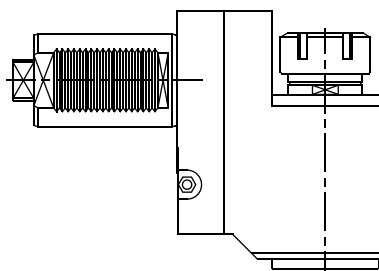


ER-50
RATIO 1:1
2000 RPM MAX



DU.011.80

RADIAL SET-BACK



ER-50
RATIO 1:1
2000 RPM MAX



Tooling for : BIGLIA - CMZ - DOOSAN - DUPLOMATIC - EMCO - HAAS - INDEX - MAZAK - MIYANO - MORI SEIKI - NAKAMURA - OKUMA - SAUTER - SCHAUBLIN - SPINNER - ETC.

MADAULA GROUP
Chicago - São Paulo
Barcelona - Bologna - Waghäusel

hello@madaula.com
Specials : welcome

