

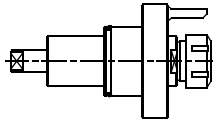
**DOOSAN** PUMA 230/230M/230MSB  
INFRACORE PUMA 240/240MA PUMA 2500LY

BMT-55

Higher precision : 0,005 mm runout

DN.000.55/ER25

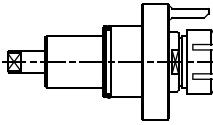
**AXIAL**



ER-25  
RATIO 1:1  
6.000 RPM MAX.

DN.000.55/ER32

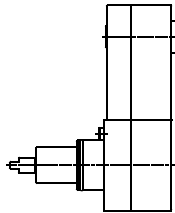
**AXIAL**



ER-32  
RATIO 1:1  
6.000 RPM MAX.

DN.001.55

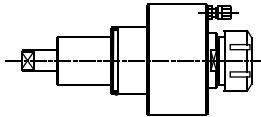
**AXIAL OFFSET**



ER-25  
RATIO 1:1  
6.000 RPM MAX.

DN.005.55/HP

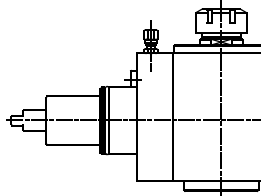
**AXIAL WITH  
HIGH PRESSURE  
COOLANT THROUGH**



ER-32  
RATIO 1:1  
6.000 RPM MAX.

DN.010.55/ER25

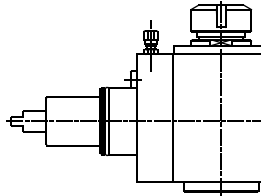
**RADIAL**



ER-25  
RATIO 1:1  
6.000 RPM MAX.

DN.010.55/ER32

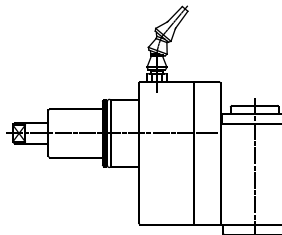
**RADIAL**



ER-32  
RATIO 1:1  
4.000 RPM MAX.

DN.011.55

**RADIAL  
SET-BACK**



ER-25A  
RATIO 1:1  
4.000 RPM MAX.



Tooling for : BIGLIA - CMZ - DOOSAN - DUPLOMATIC - EMCO - HAAS - INDEX - MAZAK - MIYANO - MORI SEIKI - NAKAMURA - OKUMA - SAUTER - SCHAUBLIN - SPINNER - ETC.

MADAULA GROUP

Chicago - São Paulo

Barcelona - Bologna - Waghäusel

[hello@madaula.com](mailto:hello@madaula.com)

Specials : welcome



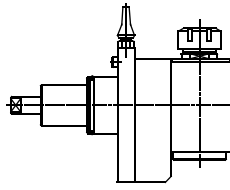
**DOOSAN** PUMA 230/230M/230MSB  
INFRACORE PUMA 240/240MA PUMA 2500LY

BMT-55

Higher precision : 0,005 mm runout

DN.013.55

**RADIAL  
SPEEDER**

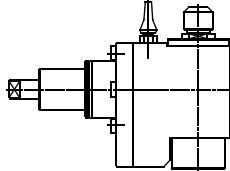


ER-25  
RATIO 1:3  
13.000 RPM MAX.



DN.018.55

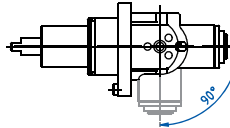
**RADIAL  
SPEEDER WITH  
HIGH PRESSURE  
COOLANT THROUGH**



ER-16  
RATIO 1:3  
9.000 RPM MAX.

DN.021.55

**RADIAL  
ADJUSTABLE**

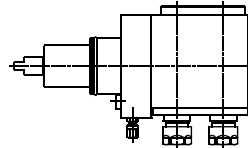


ER-16A  
RATIO 1:1  
6.000 RPM MAX.



DN.029.55

**RADIAL DOUBLE  
OUTPUT**

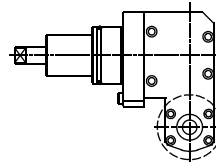


ER-16  
RATIO 1:1  
4.000 RPM MAX.



DN.030.55

**SAW-MILL**

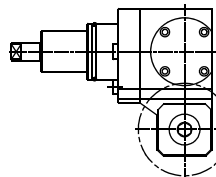


Ø22  
RATIO 1:1  
2.500 RPM MAX.



DN.030.55/R

**SAW-MILL  
REDUCER**

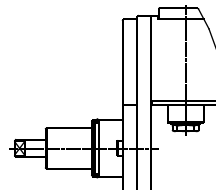


Ø22  
RATIO 2.5:1  
2.000 RPM MAX.



DN.054.55

**"Y" AXIS  
MILLING**



ER-20A  
RATIO 1:1  
3.000 RPM MAX.

Tooling for : BIGLIA - CMZ - DOOSAN - DUPLOMATIC - EMCO - HAAS - INDEX - MAZAK - MIYANO - MORI SEIKI - NAKAMURA - OKUMA - SAUTER - SCHAUBLIN - SPINNER - ETC.

MADAULA GROUP

Chicago - São Paulo

Barcelona - Bologna - Waghäusel

hello@madaula.com

Specials : welcome



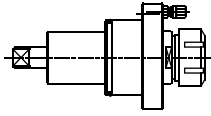
**DOOSAN** PUMA 300 PUMA 2500SY  
INFRACORE PUMA MX2000/2500

BMT-65

Higher precision : 0,005 mm runout

DN.000.65

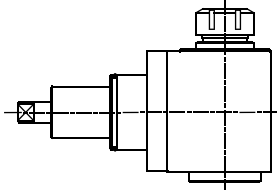
**AXIAL**



ER-32  
RATIO 1:1  
6.000 RPM MAX.

DN.010.65

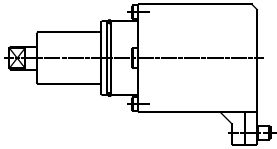
**RADIAL**



ER-32  
RATIO 1:1  
6.000 RPM MAX.

DN.026.65

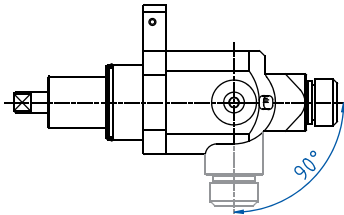
**AXIAL  
OFFSET  
SPEEDER**



ER-8  
RATIO 1:2  
9.000 RPM MAX.

DN.021.65

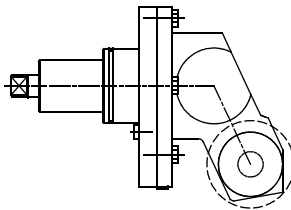
**RADIAL  
ADJUSTABLE**



ER-25  
RATIO 1:1  
4.000 RPM MAX.

DN.030.65

**SAW-MILL  
REDUCER**

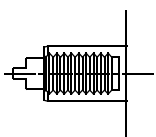


Ø22  
RATIO 4:1  
3.500 RPM MAX.

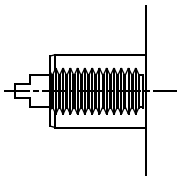


**ALSO AVAILABLE:**

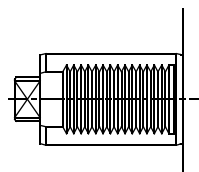
**VDI-30**  
(PUMA 200 MS)



**VDI-40**  
(PUMA 250 M/MS)



**VDI-50**  
(PUMA 400, 550)



Tooling for : BIGLIA - CMZ - DOOSAN - DUPLOMATIC - EMCO - HAAS - INDEX - MAZAK - MIYANO - MORI SEIKI - NAKAMURA - OKUMA - SAUTER - SCHAUBLIN - SPINNER - ETC.

**MADAULA GROUP**  
Chicago - São Paulo  
Barcelona - Bologna - Waghäusel

[hello@madaula.com](mailto:hello@madaula.com)

Specials : welcome



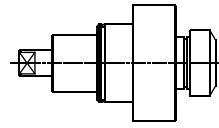
**DOOSAN**  
INFRACORE PUMA 400LM / 400LMB

BMT-75

Higher precision : 0,005 mm runout

DN.000.75

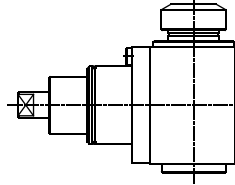
**AXIAL**



ER-40  
RATIO 1:1  
3.500 RPM MAX.

DN.010.75

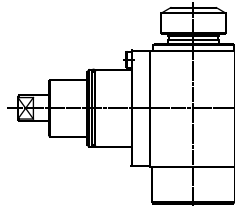
**RADIAL**



ER-40  
RATIO 1:1  
3.500 RPM MAX.

DN.016.75

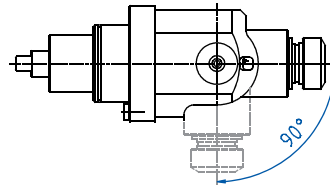
**RADIAL WITH  
HIGH PRESSURE  
COOLANT THROUGH**



ER-40  
RATIO 1:1  
3.500 RPM MAX.

DN.021.75

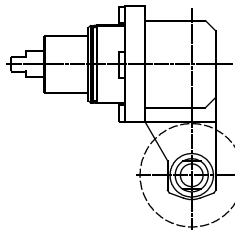
**RADIAL  
ADJUSTABLE**



ER-32  
RATIO 1:1  
3.000 RPM MAX.

DN.030.75

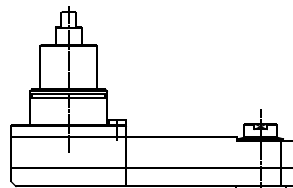
**SAW-MILL**



Ø22  
RATIO 1:1  
3.000 RPM MAX.

DN.040.75

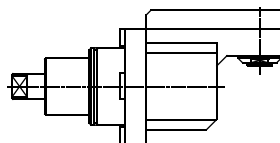
**WORK  
INSIDE TUBES**



ER-16A  
RATIO 1:1  
3.000 RPM MAX.

DN.040.75/W

**WOODRUFF  
KEY CUTTER**



ER-16A  
RATIO 1:1  
3.000 RPM MAX.



Tooling for : BIGLIA - CMZ - DOOSAN - DUPLOMATIC - EMCO - HAAS - INDEX - MAZAK - MIYANO - MORI SEIKI - NAKAMURA - OKUMA - SAUTER - SCHAUBLIN - SPINNER - ETC.

**MADAULA GROUP**  
Chicago - São Paulo  
Barcelona - Bologna - Waghäusel

[hello@madaula.com](mailto:hello@madaula.com)

Specials : welcome

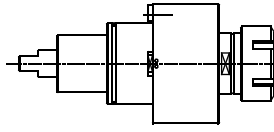


**DOOSAN**  
INFRACORE PUMA 600 / 700 / 800

BMT-85

Higher precision : 0,005 mm runout

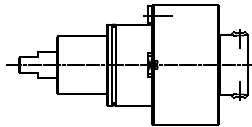
DN.000.85 **AXIAL**



ER-50  
RATIO 1:1  
3.000 RPM MAX.

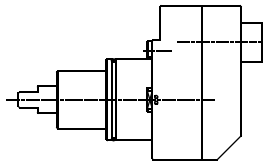


DN.005.85 **AXIAL WITH HIGH PRESSURE COOLANT THROUGH**



HSK-63  
RATIO 1:1  
4.000 RPM MAX.

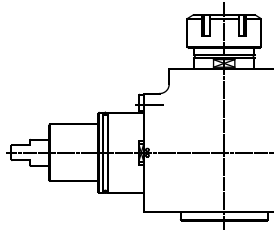
DN.006.85 **AXIAL OFFSET WITH HIGH PRESSURE COOLANT THROUGH**



WELDON Ø14  
RATIO 1:1  
4.000 RPM MAX.



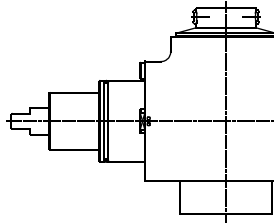
DN.010.85 **RADIAL**



ER-50  
RATIO 1:1  
4.000 RPM MAX.



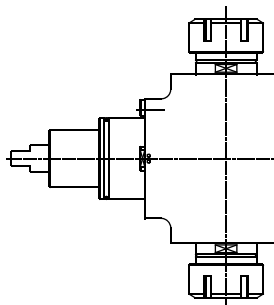
DN.016.85 **RADIAL WITH HIGH PRESSURE COOLANT THROUGH**



HSK-63  
RATIO 1:1  
4.000 RPM MAX.



DN.008.85 **RADIAL DOUBLE OUTPUT**



ER-50/ER-50  
RATIO 1:1  
4.000 RPM MAX.



Tooling for : BIGLIA - CMZ - DOOSAN - DUPLOMATIC - EMCO - HAAS - INDEX - MAZAK - MIYANO - MORI SEIKI - NAKAMURA - OKUMA - SAUTER - SCHAUBLIN - SPINNER - ETC.

**MADAULA GROUP**  
Chicago - São Paulo  
Barcelona - Bologna - Waghäusel

hello@madaula.com  
Specials : welcome



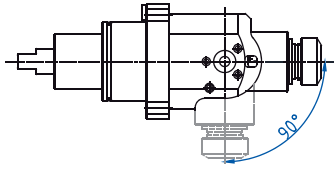
**DOOSAN**  
INFRACORE PUMA 600 / 700 / 800

BMT-85

Higher precision : 0,005 mm runout

DN.021.85

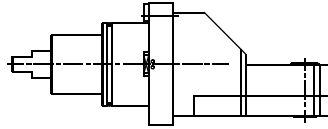
**RADIAL  
ADJUSTABLE**



ER-32  
RATIO 1:1  
3.000 RPM MAX.

DN.040.85

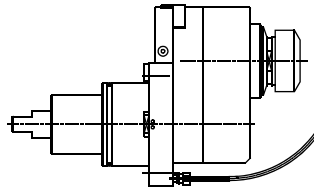
**WOODRUFF  
KEY CUTTER**



ER-20A  
RATIO 1:1  
4.000 RPM MAX.

DN.050.85

**"Y" AXIS ± 35 mm**



ER-40  
RATIO 1:1  
3.000 RPM MAX.

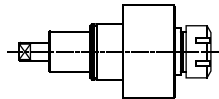


**DOOSAN**  
INFRACORE LYNX 220

BMT-45

DN.000.45

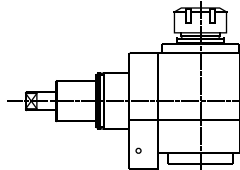
**AXIAL**



ER-25  
RATIO 1:1  
6.000 RPM MAX.

DN.010.45

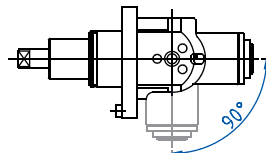
**RADIAL**



ER-25  
RATIO 1:1  
6.000 RPM MAX.

DN.021.45

**RADIAL  
ADJUSTABLE**



ER-16A  
RATIO 1:1  
6.000 RPM MAX.



Tooling for : BIGLIA - CMZ - DOOSAN - DUPLOMATIC - EMCO - HAAS - INDEX - MAZAK - MIYANO - MORI SEIKI - NAKAMURA - OKUMA - SAUTER - SCHAUBLIN - SPINNER - ETC.

MADAULA GROUP  
Chicago - São Paulo  
Barcelona - Bologna - Waghäusel

hello@madaula.com  
Specials : welcome

