

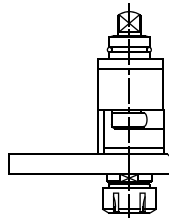
CMZ

TL-15M/TB-46M/TB-63M/TB-67M

Higher precision : 0,005 mm runout

MZ.000.15M

AXIAL

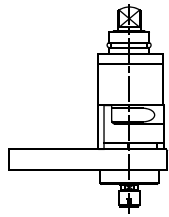


ER-25
RATIO 1:1
4.000 RPM MAX.



MZ.002.15M

**AXIAL
SPEEDER**

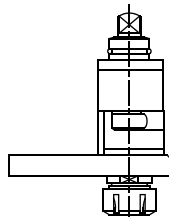


ER-11
RATIO 1:5
15.000 RPM MAX.



MZ.005.15M

**AXIAL WITH
COOLANT THROUGH**

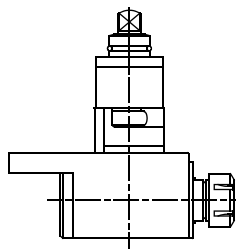


ER-25
RATIO 1:1
4.000 RPM MAX.



MZ.010.15M

RADIAL

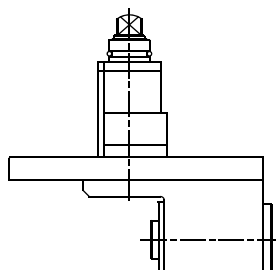


ER-25
RATIO 1:1
4.000 RPM MAX.



MZ.011.15M

**RADIAL
SET-BACK**



ER-16A
RATIO 1:1
4.000 RPM MAX.



Tooling for : BIGLIA - CMZ - DOOSAN - DUPLOMATIC - EMCO - HAAS - INDEX - MAZAK - MIYANO - MORI SEIKI - NAKAMURA - OKUMA - SAUTER - SCHAUBLIN - SPINNER - ETC.

MADAULA GROUP

Chicago - São Paulo

Barcelona - Bologna - Waghäusel

hello@madaula.com

Specials : welcome



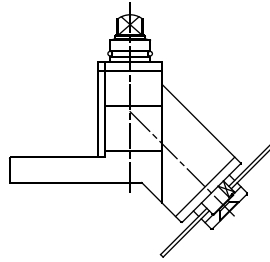
CMZ

TL-15M/TB-46M/TB-63M/TB-67M

Higher precision : 0,005 mm runout

MZ.015.15M

**RADIAL
SPECIAL**

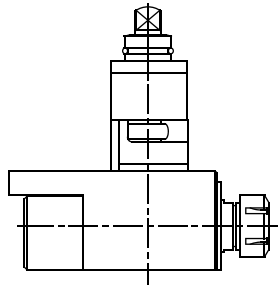


Ø 22
RATIO 1:1
4.000 RPM MAX.



MZ.016.15M

**RADIAL WITH
HIGH PRESSURE
COOLANT THROUGH**

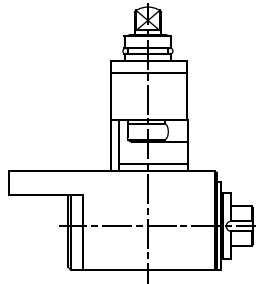


ER-25
RATIO 1:1
4.000 RPM MAX.



MZ.030.15M

SAW-MILL

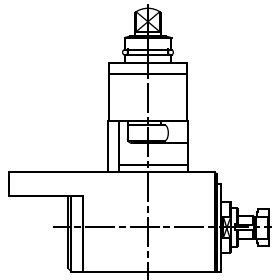


Ø 27
RATIO 1:1
4.000 RPM MAX.



MZ.034.15M

**POLYGON
MAKER**

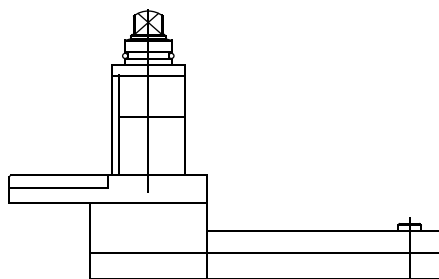


Ø 16
RATIO 1:1
4.000 RPM MAX.



MZ.040.15M

**WORK INSIDE
TUBES**



ER-11
RATIO 1:1
4.000 RPM MAX.

Tooling for : BIGLIA - CMZ - DOOSAN - DUPLOMATIC - EMCO - HAAS - INDEX - MAZAK - MIYANO - MORI SEIKI - NAKAMURA - OKUMA - SAUTER - SCHAUBLIN - SPINNER - ETC.

MADAULA GROUP

Chicago - São Paulo

Barcelona - Bologna - Waghäusel

hello@madaula.com

Specials : welcome



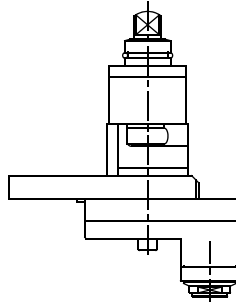
CMZ

TL-15M/TB-46M/TB-63M/TB-67M

Higher precision : 0,005 mm runout

MZ.050.15M

**AXIAL ADJUSTABLE
"Y" AXIS ± 25 mm**



ER-16A
RATIO 1:1.4
4.000 RPM MAX.

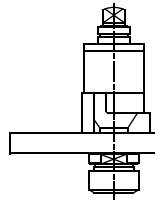


CMZ

TL-20M/TL-25M/TC-25M

MZ.000.20M

AXIAL

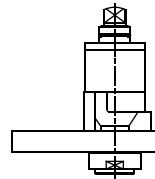


ER-32
RATIO 1:1
4.000 RPM MAX.



MZ.005.20M/A

**AXIAL WITH
COOLANT THROUGH**

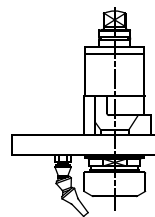


ER-32A
RATIO 1:1
4.000 RPM MAX.



MZ.005.20M/B

**AXIAL WITH
COOLANT THROUGH**

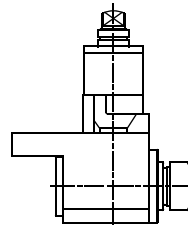


ER-40
RATIO 1:1
4.000 RPM MAX.



MZ.010.20M

RADIAL



ER-32
RATIO 1:1
4.000 RPM MAX.

Tooling for : BIGLIA - CMZ - DOOSAN - DUPLOMATIC - EMCO - HAAS - INDEX - MAZAK - MIYANO - MORI SEIKI - NAKAMURA - OKUMA - SAUTER - SCHAUBLIN - SPINNER - ETC.

MADAULA GROUP

Chicago - São Paulo

Barcelona - Bologna - Waghäusel

hello@madaula.com

Specials : welcome

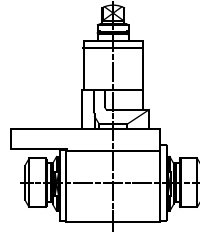


CMZ

TL-20M/TL-25M/TC-25M

Higher precision : 0,005 mm runout

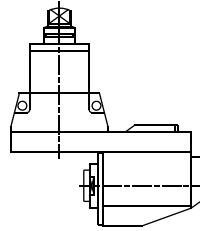
MZ.008.20M
**RADIAL
DOUBLE
OUTPUT**



ER-32
RATIO 1:1
4.000 RPM MAX.



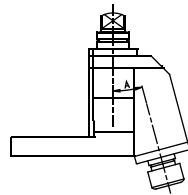
MZ.051.20M
RADIAL "Y" AXIS



ER-25A
RATIO 1:1
4.000 RPM MAX.



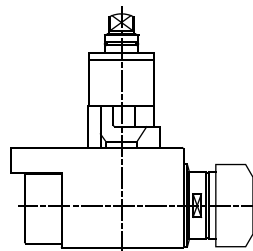
MZ.012.20M
**FIXED ANGLE SPEEDER
(ANY ANGLE)**



ER-20
RATIO 1:3
12.000 RPM MAX.



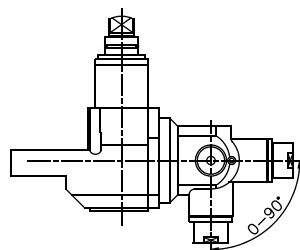
MZ.016.20M
**RADIAL WITH
HIGH PRESSURE
COOLANT THROUGH**



ER-50
RATIO 1:1
4.000 RPM MAX.



MZ.021.20M/A
**RADIAL
ADJUSTABLE**



ER-20A
RATIO 1:1
4.000 RPM MAX.

Tooling for : BIGLIA - CMZ - DOOSAN - DUPLOMATIC - EMCO - HAAS - INDEX - MAZAK - MIYANO - MORI SEIKI - NAKAMURA - OKUMA - SAUTER - SCHAUBLIN - SPINNER - ETC.

MADAULA GROUP

Chicago - São Paulo

Barcelona - Bologna - Waghäusel

hello@madaula.com

Specials : welcome



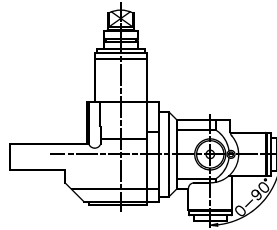
CMZ

TL-20M/TL-25M/TC-25M

Higher precision : 0,005 mm runout

MZ.021.20M/B

**RADIAL
ADJUSTABLE**

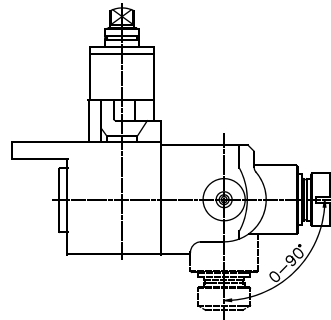


ER-16A
RATIO 1:1
4.000 RPM MAX.



MZ.021.20M/C

**RADIAL
ADJUSTABLE**

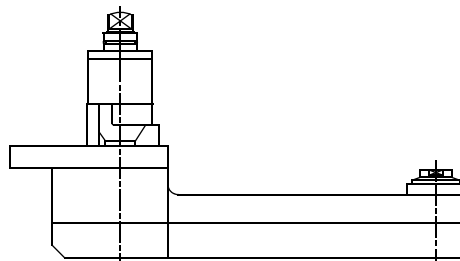


ER-32
RATIO 1:1
4.000 RPM MAX.



MZ.032.20M

**AXIAL
OFFSET**

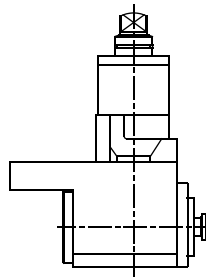


ER-16A
RATIO 1:1
4.000 RPM MAX.



MZ.034.20M

**POLYGON
MAKER**

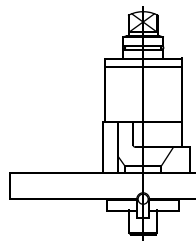


Ø 16
RATIO 1:1
4.000 RPM MAX.



MZ.038.20M

**AXIAL
SAW-MILL**



Ø 22
RATIO 1:1
4.000 RPM MAX.



Tooling for : BIGLIA - CMZ - DOOSAN - DUPLOMATIC - EMCO - HAAS - INDEX - MAZAK - MIYANO - MORI SEIKI - NAKAMURA - OKUMA - SAUTER - SCHAUBLIN - SPINNER - ETC.

MADAULA GROUP

Chicago - São Paulo

Barcelona - Bologna - Waghäusel

hello@madaula.com

Specials : welcome



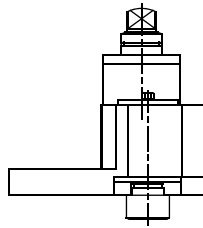
CMZ

TL-20M/TL-25M/TC-25M

Higher precision : 0,005 mm runout

MZ.050.20M/A

**AXIAL FIXED
"Y" AXIS SPEEDER
(Y = WHATEVER)**

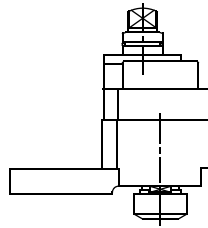


ER-20
RATIO 1:2
8.000 RPM MAX.



MZ.050.20M/B

**AXIAL FIXED
"Y" AXIS
(Y = WHATEVER)**



ER-25
RATIO 1:1
4.000 RPM MAX.

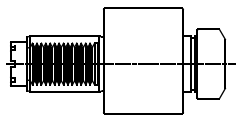


CMZ

TBI-520 VDI-50

MZ.000.50

AXIAL

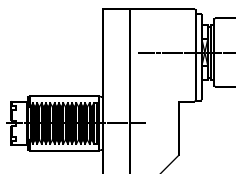


ER-40
RATIO 1:1
3.000 RPM MAX.



MZ.001.50

**AXIAL
OFFSET**



ER-40
RATIO 1:1
3.000 RPM MAX.



Tooling for : BIGLIA - CMZ - DOOSAN - DUPLOMATIC - EMCO - HAAS - INDEX - MAZAK - MIYANO - MORI SEIKI - NAKAMURA - OKUMA - SAUTER - SCHAUBLIN - SPINNER - ETC.

MADAULA GROUP

Chicago - São Paulo

Barcelona - Bologna - Waghäusel

hello@madaula.com

Specials : welcome



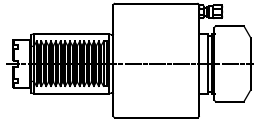
CMZ

TBI-520 VDI-50

Higher precision : 0,005 mm runout

MZ.005.50

**AXIAL WITH
COOLANT THROUGH**

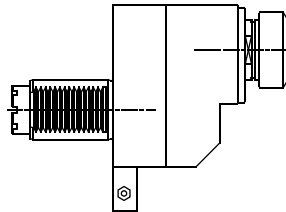


ER-40
RATIO 1:1
3.000 RPM MAX.



MZ.006.50

**AXIAL OFFSET
WITH HIGH PRESSURE
COOLANT THROUGH**

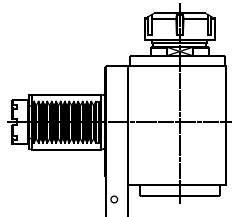


ER-40
RATIO 1:1
3.000 RPM MAX.



MZ.010.50

RADIAL

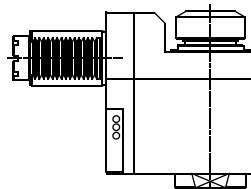


ER-40
RATIO 1:1
3.000 RPM MAX.



MZ.011.50

RADIAL SET-BACK

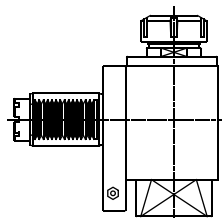


ER-40
RATIO 1:1
3.000 RPM MAX.



MZ.016.50

**RADIAL WITH
HIGH PRESSURE
COOLANT THROUGH**



ER-40
RATIO 1:1
3.000 RPM MAX.

Tooling for : BIGLIA - CMZ - DOOSAN - DUPLOMATIC - EMCO - HAAS - INDEX - MAZAK - MIYANO - MORI SEIKI - NAKAMURA - OKUMA - SAUTER - SCHAUBLIN - SPINNER - ETC.

MADAULA GROUP

Chicago - São Paulo

Barcelona - Bologna - Waghäusel

hello@madaula.com

Specials : welcome



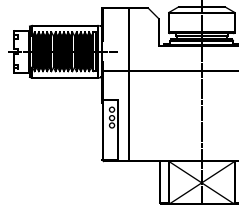
CMZ

TBI-520 VDI-50

Higher precision : 0,005 mm runout

MZ.017.50

**RADIAL SET-BACK
WITH HIGH PRESSURE
COOLANT THROUGH**

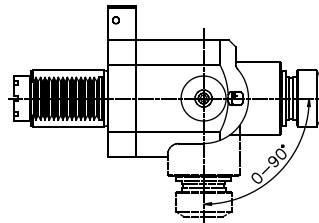


ER-40
RATIO 1:1
3.000 RPM MAX.



MZ.021.50

**RADIAL
ADJUSTABLE**

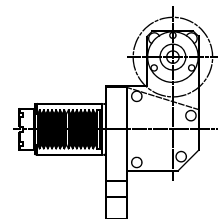


ER-32
RATIO 1:1
3.000 RPM MAX.



MZ.030.50

SAW-MILL

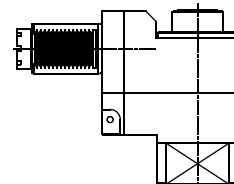


Ø 25.4
RATIO 1:1
3.000 RPM MAX.



MZ.051.50

**RADIAL FIXED
"Y" AXIS
(Y = WHATEVER)**



ER-32A
RATIO 1:1
3.000 RPM MAX.



Tooling for : BIGLIA - CMZ - DOOSAN - DUPLOMATIC - EMCO - HAAS - INDEX - MAZAK - MIYANO - MORI SEIKI - NAKAMURA - OKUMA - SAUTER - SCHAUBLIN - SPINNER - ETC.

MADAULA GROUP

Chicago - São Paulo

Barcelona - Bologna - Waghäusel

hello@madaula.com

Specials : welcome

